



SUMMARY OF TOITŪ CARBONZERO CERTIFICATION

YOUTH HOSTELS ASSOCIATION NEW ZEALAND INCORPORATED

Year 2 of 3 year certificate period



Youth Hostels Association of New Zealand Incorporated meets the requirements of Toitū carbonzero certification having measured its greenhouse gas emissions in accordance with ISO 14064-1:2006, committed to managing and reducing its emissions and neutralised its remaining unavoidable emissions through the cancellation of an appropriate number of verified carbon credits in respect of the operational activities of its organisation, excluding associate hostels.

YHA New Zealand is a registered charitable organisation and an incorporated society which has been operating in New Zealand since 1932. It is membership based and part of Hostelling International (HI). Members receive reciprocal benefits internationally in the world's first and largest budget accommodation network.

In line with its formal aims and objects, YHA New Zealand's mission is: To deliver quality budget accommodation and travel experiences which enrich people's understanding of each other, the environment and New Zealand.

In working to achieve its mission, YHA New Zealand is committed to:

- Live our values of respect, integrity, passion and excellence
- Focus on sustainability through our triple bottom line of People, Planet and Profit
- Recognise and respect the status of Māori in Aotearoa New Zealand
- Provide a safe and healthy workplace and hostel experience for all

YHA New Zealand makes sustainability central to the way we run the organisation. We are committed to operating an environmentally responsible tourism business which contributes to the economic, social and environmental wellbeing of New Zealand. Working sustainability is a way of thinking for all our staff and we remain committed to caring for the environment which underpins the New Zealand tourism industry.

YHA's mission is delivered through a hostel network which operates 24/7 and is comprised of both YHA managed hostels and Associate partner and Franchise (third party operated) hostels. YHA's national office is located in Christchurch. YHA's latest Annual Report is available on our website <https://www.yha.co.nz/about/formal-documents>

EMISSIONS SUMMARY ¹

YHA New Zealand's emissions for this year (01 July 2019 to 30 June 2020) were 738.38 tCO₂e. The operational GHG emission sources included in this inventory are shown in Figure 1 below.

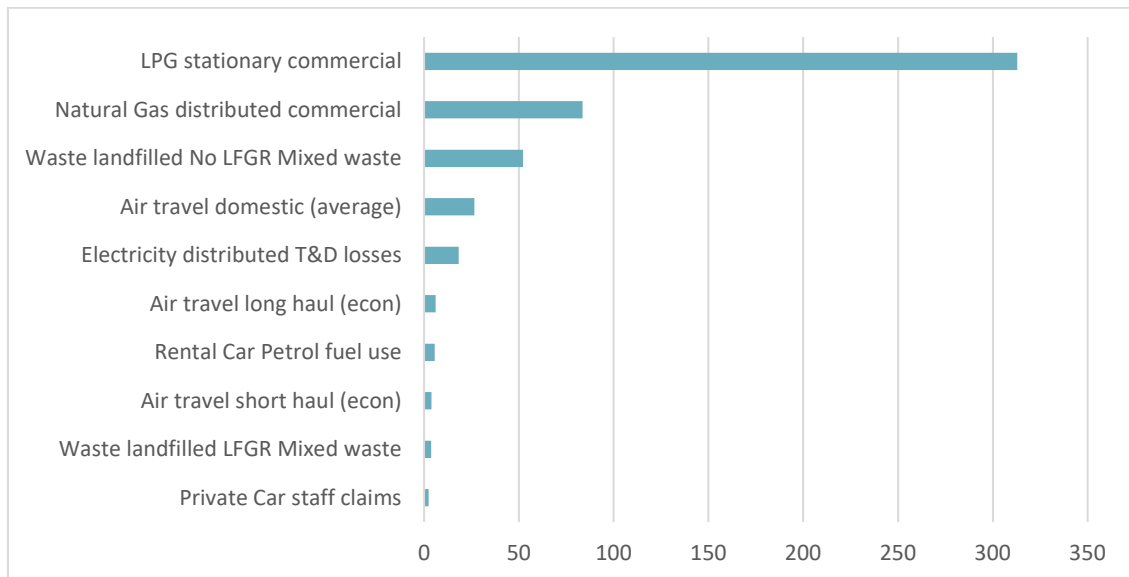


Figure 1: GHG emissions by emissions source

Emissions as tonnes of carbon dioxide equivalents (tCO₂e) for this period were:

Scope	tCO ₂ e
Scope 1	403.83
Scope 2	220.93
Scope 3 Mandatory	113.62
Scope 3 Additional	0.00
Scope 3 One time	0.00
Total gross emissions	738.38
Total net emissions²	517.45

Youth Hostels Association New Zealand have consumed 2,261,321.00 kWh of electricity in New Zealand. Youth Hostels Association New Zealand has purchased renewable energy certificates through the New Zealand Energy Certificate Scheme (NZECS) to cover all its New Zealand electricity use. The purchase of Renewable Energy Certificates through NZECS has been verified by Toitū Envirocare. These REC purchases have not been included in the reported gross GHG emissions but have been independently assessed as meeting the requirements of the GHG Protocol Scope 2 guidance. The reported net GHG emissions exclude emissions associated with the generation of electricity covered by these renewable energy certificates.

¹ **Disclaimer:** This Disclosure Statement is a summary of the verified information considered for certification and the certification decision. It should not be taken to represent the full submission for certification. Whilst every effort has been made to ensure that the information in this Disclosure Statement is accurate and complete, Enviro-Mark Solutions Limited (trading as Toitū Envirocare) does not, to the maximum extent permitted by law, give any warranty or guarantee relating to the accuracy or reliability of the information.

² The purchase of Renewable Energy Certificates through the New Zealand Energy Certificate Scheme (NZECS) has been verified by Toitū Envirocare and is beyond Toitū's current JAS-ANZ accreditation scope.



EMISSIONS REDUCTIONS

To reduce its emissions, YHA New Zealand has developed a GHG emissions management plan and reduction targets.

The organisation is committed to managing and reducing its emissions in accordance with the programme requirements. The table below provides details of the emission reduction targets to be implemented. These are 'SMART' targets (specific, measurable, achievable, realistic, time-constrained). Note that we are still awaiting our Certified Renewable Energy certificate from Meridian and having this included in this report would benefit us considerably.

The table below shows that we have amended the measure for our total emissions target. Bed nights are no longer as useful a measure because the café impacts on those figures. Revenue ratios won't necessarily reflect emission reductions as it could just reflect increased pricing so the relative emissions/revenue falls without actually having an impact on the core activity of reducing emissions. Total emissions are the true measure and one we should remain focused on irrespective of price or business activity changes.

Emissions reduction initiative	Target	Baseline (tCO ₂ e)	Target date
Reduce consumption of electricity	5%	373.00	30/06/2022
Reduce consumption of gas (total)	3%	387.00	30/06/2022
Subtarget	3%	0.00	30/06/2023
Reduce air travel (total)	5%	77.00	30/06/2022
Certified Green Electricity		0.00	31/03/2021
Total inventory (i.e. all mandatory emissions)	5%	Base year: 914.06	30/06/2023
Emissions specific 'subtargets'	5%	387.00	30/06/2023

This is the fifth year of reporting under the Toitū carbonzero programme. An absolute reduction in Scope 1 and 2 emissions of 146.92 tCO₂e has been achieved against base year. A reduction in emissions intensity (for Scope 1, 2 and mandatory Scope 3 emissions) of 4.86 tCO₂e/\$M has been achieved based upon a 5 year rolling average.*

*Reduction calculations have been made based on location-based calculations instead of market-based to align with historical reporting methods.

EMISSIONS BOUNDARIES

YHA New Zealand consists of National Office, hostels and one café.

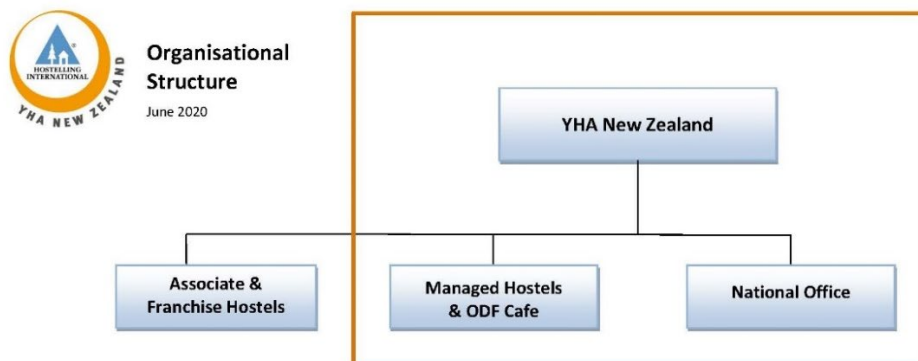


Figure 2: Organisational structure showing business units included and excluded



An operational control consolidation approach was used to account for emissions.

This is with reference to the methodology described in the GHG Protocol and ISO 14064-1:2006 standards.

The following emissions sources were excluded from the inventory for this measurement period:

Excluded emissions
Emissions from Geothermal activity are more relevant for electricity generation where they are using steam in a high pressure environment, in the form of fugitive methane gases. For the straight hot water extraction “probably safe to say any emissions would be negligible, and if there were emissions, there is no advice on a method for measuring those emissions with the exception of actually doing some type of [direct sensor] monitoring at the site” which is over and above practical purpose for compiling our inventories.
We use HFCs but they are excluded (e.g. due to <i>de minimis</i> or operational control reasons).
Combustion of biomass occurs at only two of our hostels (pellet fires), but these use a very small (<i>de minimis</i>) amount, working out at 0.007 tonnes of carbon equivalent a year. This is therefore excluded from the inventory.

Excluded emissions do not exceed 5% of the total footprint within the organisation boundary stated.

OFFSET

518 #0302 International set portfolio credits have been cancelled on the Toitū Envirocare register and will be cancelled (or equivalent) on the relevant external registry within one month of certification. Specific details of cancellation, including serial numbers, will be available on the external registry: <https://registry.goldstandard.org/credit-blocks>

A total of 220.93 tCO₂e emissions from electricity, calculated using the location-based methodology, were not required to be offset as these emissions are avoided using Renewable Energy Certificates from Meridian.

CERTIFICATE DETAILS

Certification status – Toitū carbonzero certified organisation

Certificate number – 2019104J, Year 2 of 3 year certificate period

Valid until – 17 October 2022

Measurement period – 01 July 2019 to 30 June 2020

Base year – 01 July 2015 to 30 June 2016

Verified by – Constantia Consulting Limited

Level of assurance – Reasonable

Data quality score – High