

# Summary of carboNZero certification



## Youth Hostels Association of New Zealand Incorporated

Year 1 of 3 year certificate period

*Youth Hostels Association of New Zealand Incorporated meets the requirements of carboNZero<sup>Cert™</sup> certification having measured its greenhouse gas emissions in accordance with the requirements of ISO 14064-1:2006, committed to managing and reducing its emissions and neutralised its remaining unavoidable emissions through the cancellation of an appropriate number of verified carbon credits in respect of the operational activities of its organisation, excluding associate hostels.*



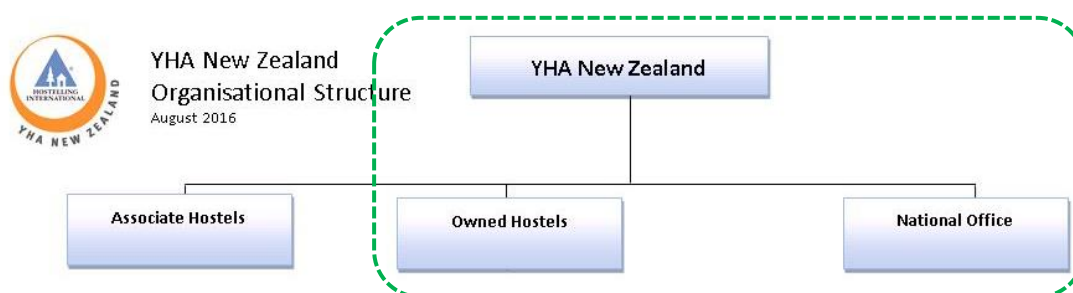
**Introduction<sup>1</sup>** – YHA New Zealand is a registered charitable organisation and an incorporated society which has been operating in New Zealand since 1932. YHA New Zealand’s mission is to deliver quality budget accommodation and travel experiences which enrich people’s understanding of each other, the environment, and New Zealand.

In working to achieve its mission, YHA New Zealand is committed to:

- operating in a sustainable manner, reflected in a people, planet, profit (triple bottom line) commitment;
- developing and maintaining relationships with Maori which recognise their indigenous status in New Zealand;
- living our values; all staff expressing and embracing our values of integrity, respect, excellence and passion, in all activities and relationships.

YHA New Zealand makes sustainability central to the way we run the organisation. We are committed to operating an environmentally responsible tourism business which contributes to the economic, social and environmental wellbeing of New Zealand. Working sustainability is a way of thinking for all our staff and we remain committed to caring for the environment which underpins the New Zealand tourism industry.

**Boundary** – Figure 1 below shows the organisational structure used for describing the organisation’s greenhouse gas (GHG) emissions inventory, and what business units were included (within the green box) in the inventory in the context of the entire organisational profile. YHA NZ has an investment property in Wellington that we do not include in this inventory. YHA Associate and Franchise Hostels are also excluded from this inventory.



**Figure 1:** Organisational structure showing business units included and excluded.

**Consolidation approach** – The operational control consolidation approach has been used to account for operational emissions with reference to the methodology described in the GHG Protocol and ISO 14064-1:2006 standards.

<sup>1</sup> **Disclaimer:** This Disclosure Statement is a summary of the verified information considered for certification and the certification decision. It should not be taken to represent the full submission for certification. Whilst every effort has been made to ensure that the information in this Disclosure Statement is accurate and complete, Enviro-Mark Solutions Limited does not, to the maximum extent permitted by law, give any warranty or guarantee relating to the accuracy or reliability of the information.

# Summary of carboNZero certification



Youth Hostels Association of New Zealand Incorporated

Year 1 of 3 year certificate period

Base year – 01/07/2015 to 30/06/2016

Measurement period – 01/07/2015 to 30/06/2016

Emissions source inclusions – The operational GHG emissions for the organisation by emissions source are shown in Figure 2 below.

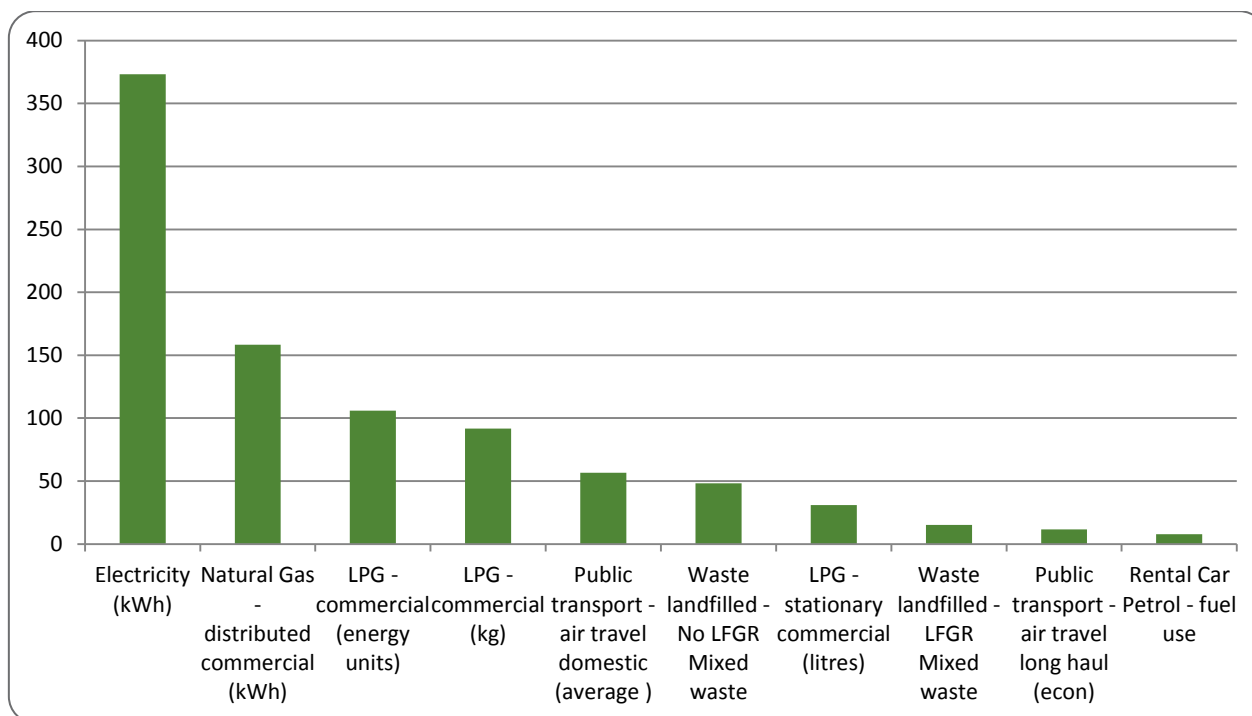


Figure 2: GHG emissions by emissions source (tCO<sub>2</sub>e).

Emissions as tonnes of carbon dioxide equivalents (tCO<sub>2</sub>e) for this period were:

Emissions summary by scopes		Units
<b>Scope 1 total</b>	<b>398.37</b>	<b>tCO<sub>2</sub>e</b>
<b>Scope 2 total</b>	<b>373.31</b>	<b>tCO<sub>2</sub>e</b>
<b>Scope 3 total</b>	<b>142.39</b>	<b>tCO<sub>2</sub>e</b>
<i>Mandatory scope 3</i>	<i>142.39</i>	<i>tCO<sub>2</sub>e</i>
<i>Additional scope 3</i>	<i>0.00</i>	<i>tCO<sub>2</sub>e</i>
<i>One-time scope 3</i>	<i>0.00</i>	<i>tCO<sub>2</sub>e</i>
<b>Total inventory:</b>	<b>914.06</b>	<b>tCO<sub>2</sub>e</b>

Emissions source exclusions – The following emissions sources were excluded from the inventory for this measurement period:

- Bore water extraction from geothermal well in Rotorua: investigated potential emission and conclusion was that for the nature of this activity emissions would be negligible.

Emissions reduction commitments – A GHG emissions management plan and reduction targets have been developed with an overall target of 5% reduction in total emissions (i.e. all mandatory emissions measured) per bednight by 2018. Some reduction projects include:

- Reduce electricity and gas through continued installation of solar power, hot water, and double glazing across the hostel network
- Reduce air travel by increasing use of video conferencing



# Summary of carboNZero certification

Youth Hostels Association of New Zealand Incorporated

Year 1 of 3 year certificate period

- Reduce waste to landfill by installing new recycling collection bins across the network that are easier for guests to separate out their rubbish and recycling.

**Offset** – 915 PFSI Hinewai Forest (NZ) credits have been cancelled on the carboNZero register and will be cancelled (or equivalent) on the relevant external registry within one month of certification. Specific details of cancellation, including serial numbers, will be available on the external registry: [www.epa.govt.nz/e-m-t/reports/Pages/Voluntary-unit-cancellations.aspx](http://www.epa.govt.nz/e-m-t/reports/Pages/Voluntary-unit-cancellations.aspx).

**Verified by** – Enviro-Mark Solutions Limited

**Data quality score** – High

**Threshold of materiality** – Excluded emissions do not exceed 5% of the total footprint within the organisation boundary stated.

**Level of assurance** – Reasonable

**Certification status** – carboNZero certified organisation

**Certificate number** – 2016081J, Year 1 of 3 year certificate period

**Valid until** – 23 September 2019